

THE FEATHERS ASSOCIATION

Impact report

2021-2022

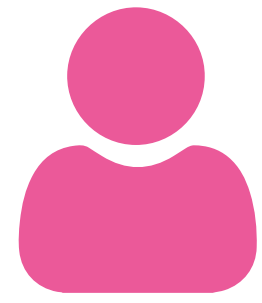
The Feathers Association provides opportunities for children, young people and communities, currently in London, to develop in a positive way through informal education, sporting, cultural and recreation activities since 1934.

The Charity has built up a substantial reputation for supporting centre-based youth work and has a Marylebone Youth and Community Club based in the City of Westminster which provides young people programmes Monday to Friday, throughout the day and evening.

Doing good for others, changing lives.

Thank you for your generous support that allows us to help those children and young people in need. Here it is some highlights of the year for you.





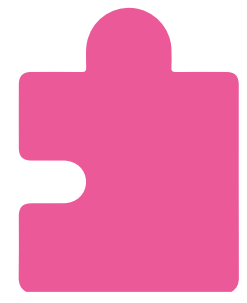
Club is working with
668
Club Members



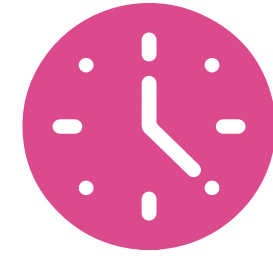
56
Nationalities



95%
Westminster
Residents



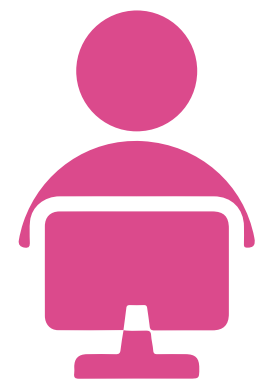
Club delivers
20
Programmes



1,147
Learning hours



10.2
weeks of holiday
activities



Club supports
10
Trainees
within Traineeship
Programme

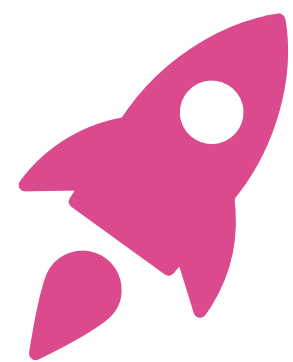


5
Junior volunteers



2 University
placements

**Developing life and employability skills.
Reducing barriers to employment.
Helping young people to gain qualifications,
education and training.**



20
Partners on
various projects

(Local councillors, Westminster MP,
Met Police, North East Westminster
Family Hub and others)



52
Nationally recognised
accreditations



The need

Our Marylebone Youth and Community Club is located in the area of significant need: the Church Street, Bryanston & Dorset and Regents Park wards. According to the Index of Multiple Deprivation* the Church Street ward is one of the most deprived in London and is within **10%** of the most deprived in the UK:

458 resident families identified as **Troubled**

13,203 population, **26%** from which are **under 18 yo.**

14% of the population **unemployed**

28% has no qualification

33% of children in the ward are **receiving free school meals**

Only 57% (average 72%) of them during Early Years Foundation Stage achieved a good level

Only 24% (on average 27%) pupils **achieved GCSE (A*-C) grades**

24% increase in **knife crime** offences in the area in the last year and knife crime with injury offences have **increased by 8% in Westminster**

Well known fact, that **85%** of their time children and young people spend outside the school. This means they need somewhere to go, something to do, someone to talk to. There are few places for young people to meet and enjoy peer support in that area. The Feather Association provides the safe space for them to do so at its Marylebone Youth and Community Club, 8 min by foot from the Church Street.

* <https://www.westminster.gov.uk/media/document/church-street-ward-profile---2022>





Success Story

The Saatchi name is world renowned. Their London gallery has showcased emerging artists since 1985, gaining a strong reputation as a starting place for artists who would later go on to achieve global status in the art world.

We are incredibly proud of our wonderful young person and now Trainee Youth Worker, Serena who recently achieved a special feat, seeing her own art on display at the famous gallery.

Our Youth Workers are passionate advocates for the potential of all young people, empowering them to follow their passions and aim for the very top.

Serena is a shining example of what can be achieved, with a blend of hard work and a supportive network. Our team are here to support the whole community reach their potential.

Please Help Us

Help us to build more success stories by [Donating Now](#)

Thank You

Get in touch to discuss partnership opportunities and **its benefits to your business: fundraising@feathersassociation.org.uk**



The Feathers Youth and Community Club:
12 Rossmore Road, London, NW1 6NX
The Feathers Association Head office:
22-24 Buckingham Palace Road, London SW1W 0QP
Registered Charity in England and Wales No. 303320
A company limited by guarantee.
Registered in England and Wales No. 291140
Tel. No. 0207 723 9167, www.feathersassociation.org.uk